

**Parish of Repton Neighbourhood Development Plan**

**2016 - 2028**

**Strategic Environmental Assessment and Habitat  
Regulations Assessment Screening Determination**

**April 2017**

## **Contents**

1.0 Introduction

2.0 Scope of the Parish of Repton Neighbourhood Development Plan

3.0 Strategic Environmental Assessment Screening

4.0 Habitats Regulations Assessment Screening

5.0 Conclusions

Appendix 1 Map of International Sites within and around South Derbyshire District.

Appendix 2 Consultation Responses from Natural England

Appendix 3 Consultation Responses from Historic England

Appendix 4 Consultation Responses from the Environment Agency



## **1.0 Introduction.**

- 1.1 This statement sets out the Council's determination under Regulation 9 (1) of the Environmental Assessment of Plans and Programmes Regulations 2004 on whether or not a Strategic Environmental Assessment is required for the Parish of Repton Neighbourhood Development Plan. This statement also sets out the Council's determination as to whether Appropriate Assessment is required under Regulation 102 of the Conservation of Habitats & Species Regulations 2010 (as amended).

### **Strategic Environmental Assessment**

- 1.2 Under the requirements of the European Union Directive 2001/42/EC (Strategic Environmental Assessment (SEA) Directive)) and Environmental Assessment of Plans and Programmes Regulations (2004) specific types of plans that set out the framework for future development consent of projects must be subject to an environmental assessment.
- 1.3 There are exceptions to this requirement for plans that determine the use of a small area at a local level and for minor modifications if it has been determined that the plan is unlikely to have significant environmental effects. Having reviewed the nature and extent of the plan proposed, it was considered that the Neighbourhood Development Plan could be exempt from any requirement for Strategic Environmental Assessment.
- 1.4 In accordance with the provisions of the SEA Directive and the Environmental Assessment of Plans and Programmes Regulations (2004)(Regulation 9(1)), the Council must determine if a plan requires an environmental assessment. Where the Council determines that SEA is not required then under Regulation 9(3) the Council must prepare a statement setting out the reasons for this determination.

### **Habitats Regulations Assessment**

- 1.5 A Habitats Regulations Assessment (HRA) is required to determine whether a plan or project would have significant adverse effects upon the integrity of internationally designated sites of nature conservation importance, or Natura 2000 sites. The need for HRA is set out within the EC Habitats Directive 92/43/EC and transposed into British Law by Regulation 102 of the Conservation of Habitats and Species Regulations (2010) as amended, the 'Habitats Regulations'. In accordance with Article 6 of the Habitats Directive (92/43/EEC) and Regulation 102 of the Habitats Regulations, the Council must determine if a plan requires Appropriate Assessment. Section 4 of this report deals with the need for Habitats Regulation Assessment.

## Scope of the Repton Neighbourhood Plan

- 2.1 South Derbyshire District Council designated a Neighbourhood Area for the whole of Repton Parish in February 2015 as illustrated in Figure 1 below. The villages of Repton and Milton are located within this area. The Parish of Repton Neighbourhood Development Plan is being prepared by the community through the Neighbourhood Working Group supported by the Parish Council.

**Figure 1 Extent of Neighbourhood Area for Repton Parish Plan**



- 2.2 This screening is based on the Pre-Submission (Version 24) of the Plan (dated January 2017). The draft Plan includes policies that will inform decision making in the villages of Repton and Milton and other areas in the plan area in respect of:
- Housing
  - Environment
  - Amenities and Services
  - Leisure and Employment
  - Travel and Transport
- 2.3 The Plan does not allocate any specific housing or employment sites, although it is noted that it does not support the inclusion of a proposed housing site being promoted through the Part 2 Local Plan at Milton Road Repton (S/101). However in all other matters it is in general conformity with the Adopted Part 1 Local Plan and submitted Part 2 Local Plan.

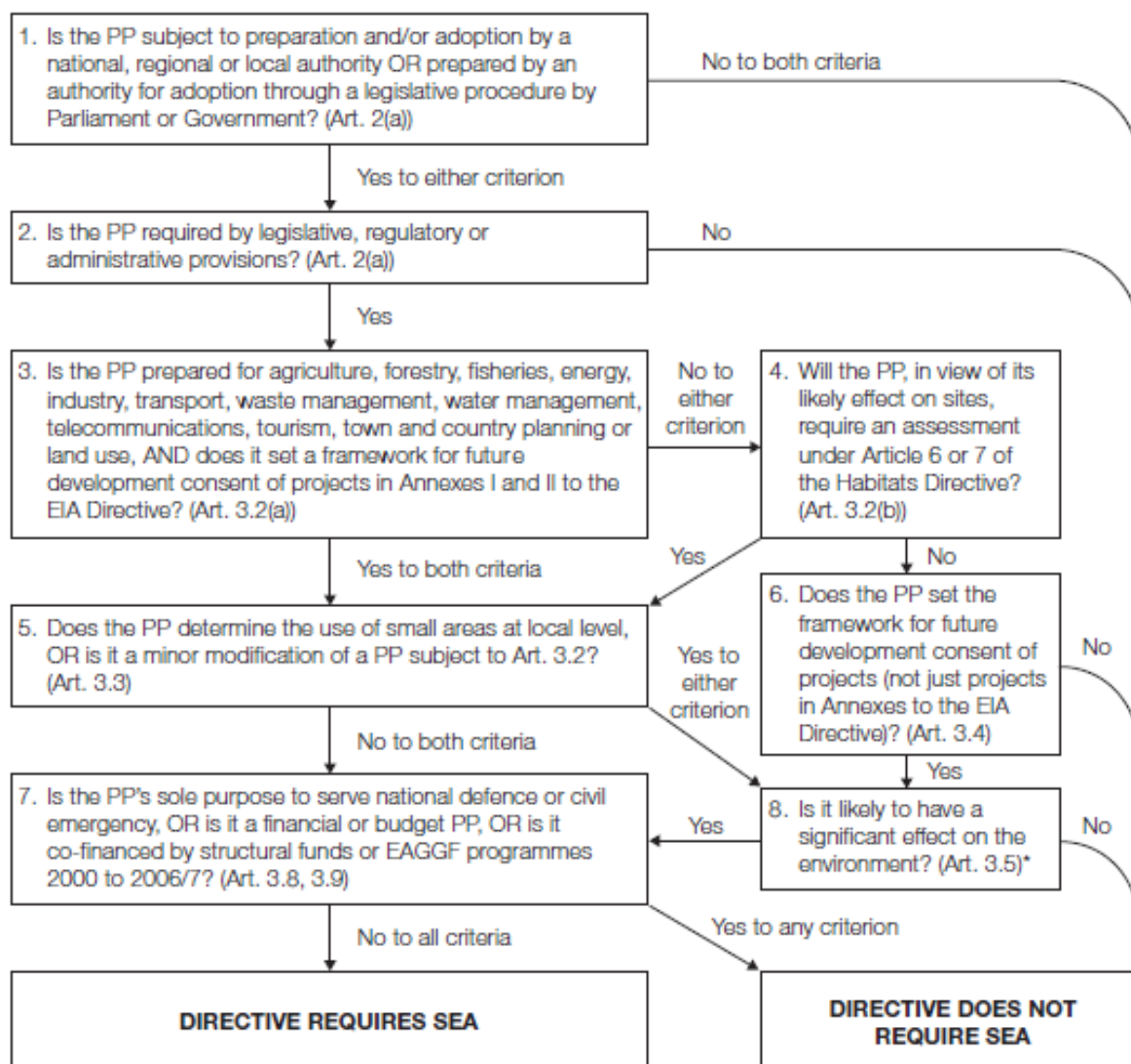
### **3.0 Strategic Environmental Assessment (SEA) Screening**

#### **The SEA Screening Process**

- 3.1 The process for determining whether or not an SEA is required is called screening. In order to screen, it is necessary to determine if a plan will have significant environmental effects using the criteria set out in Annex II of the SEA Directive and Schedule I of the Regulations. A determination cannot be made until the three statutory consultation bodies have been consulted.
- 3.2 Within 28 days of making its determination the authority must publish a statement setting out its decision. If it determines that an SEA is not required, the statement must include the reasons for this.
- 3.3 A draft version of the screening document was subject to consultation between 15 November and 30 December 2016. However the Repton NDP was subject to notable changes prior to any determination being made by the Authority. In light of these changes the District Council has updated its draft screening report and reconsulted the Consultation Bodies alerting them to the nature and scope of the proposed amendments included in the Submission Version of the Neighbourhood Plan (version 24) requesting amended comments where necessary. These comments will be included in this final version of the Screening Report (this document) and will be published alongside any future determination statement issued by this Authority.
- 3.4 Practical guidance to the SEA Directive, published by the Department of Environment in 2005 (but still relevant), provides a useful diagram of the criteria for application of the Directive to plans and programmes (PPs) shown in Figure 2 overleaf.

**Figure 2 Application of the SEA Directive to Plans and Programmes**

This diagram is intended as a guide to the criteria for application of the Directive to plans and programmes (PPs). It has no legal status.



\*The Directive requires Member States to determine whether plans or programmes in this category are likely to have significant environmental effects. These determinations may be made on a case by case basis and/or by specifying types of plan or programme.

3.5 The Council has considered the process set out in the above figure and the findings of this review are set out in the following table (Table 1).

**Table 1 Assessment of Characteristics of a Neighbourhood Plan**

Stage	Yes/No/Uncertain	Reasoning
1. Is the PP (plan or programme) subject to preparation and/or adoption by a national, regional or local authority OR prepared by an authority for adoption through a legislative procedure by Parliament or Government? (Art. 2(a))	Yes	Neighbourhood Development Plans (NDPs) are prepared by a qualifying body (Parish/ Town Councils) under the Town and Country Planning Act 1990 (as amended). The preparation of NDPs is subject to the Neighbourhood Planning (General) Regulations 2012 and the Neighbourhood Planning (referendums) Regulations 2012. A NDP is subject to independent examination

		and local referendum and subject to the outcome of those will be 'made' by the Council. The process is prescribed by legislation.
<b>2.</b> Is the PP required by legislative, regulatory or administrative provisions? ((Art. 2 (a))	No	The preparation of a Neighbourhood Development Plan is optional. However, once 'made' it will form part of the statutory Development Plan for South Derbyshire and will be used when making decisions on planning applications in the area it covers
<b>3.</b> Is the PP prepared for agriculture, forestry, fisheries, energy, industry, transport, waste management, telecommunications, tourism, town and country planning or land use AND does it set a framework for future development consent of projects in Annexes 1 and II to the EIA Directive? (Art. 3.2 (a))	Yes	A Neighbourhood Development Plan is primarily prepared for the purposes of town and country planning and land use, but can also inform decisions relating to tourism, telecommunications, waste management, transport, industry, energy, agriculture and forestry related uses. It does set out a framework for development within the Repton Parish area, including Infrastructure development which may fall under no. 10 of Annex II of the EIA Directive (for example, for potential social/community infrastructure which may fall under 'urban development' project).
<b>4.</b> Will the PP, in view of its likely effect on sites, require an assessment for future development under Article 6 or 7 of the Habitats Directive? (Art. 3.2 (b))	No	A Neighbourhood Development Plan could in certain instances have an impact on sites protected pursuant to the Habitats Regulations. The NDP has been subject to a screening assessment (outlined in Section 4 of this report) and it is concluded that the NDP would have no effect on any such sites.
<b>5.</b> Does the PP determine the use of small areas at a local level, OR is it a minor modification of a PP subject to Art.3.2? (Art. 3.3)	Yes	The NDP will cover the Parish of Repton only and hence will determine the use of small areas at a local level.
<b>6.</b> Does the PP set the framework for future development consent of projects (not just projects in annexes to the EIA Directive)? (Art. 3.4)	Yes	Once 'made' the NDP will form part of the Development Plan and will be used in the decision making process on planning applications. It therefore, sets the framework for future developments at a local level.
<b>7.</b> Is the PP's sole purpose to serve the national defence or civil emergency, OR is it a financial or budget PP, OR is it co-financed by structural funds or EAGGF programmes 2000 to 2006/7? (Art. 3.8. 3.9)	No	The NDP does not deal with these issues.
<b>8.</b> Is it likely to have a significant effect on the environment? (Art.3.5)	Uncertain	The NDP could potentially have an effect on the environment. However, whether this is significant depends on the proposals within the Neighbourhood Development Plan. A detailed assessment of the potential for significant environmental effects is outlined in Table 2 (overleaf).



3.6 The conclusion of the assessment in Table 1 is that depending on the content of the Neighbourhood Development Plan, an SEA may be required. For this reason a specific assessment of the Parish of Repton Neighbourhood Development Plan is required to determine the likely significant effects.

**Likely Significant Effects**

3.7 To decide whether the Neighbourhood Development Plan might have significant environmental effects, the content and the detail of the Plan (including policies set out therein) have been assessed against the criteria set out in Schedule 1 to the Environmental Assessment of Plans and Programmes Regulations 2004. Using the information supplied by the Working Group acting on behalf of the Parish Council at the current stage of preparation the Following table (table 2) sets out an assessment of the likely significant effects of the Plan.

Schedule 1 Criteria	Likely to have significant environmental effects?	Comments
<b>1. The characteristics of plans and programmes, having regard, in particular to:</b>		
1a) the degree to which the plan or programme sets a framework for projects and other activities, either with regard to the location, nature, size and operating conditions or by allocating resources.	No	The NDP sets out a local policy framework for development proposals. It includes detail on potential housing development locations, although where proposals are included they are for sites which are allocated through the South Derbyshire Local Plan which has been subject to Sustainability Appraisal and Strategic Environmental Assessment and assessed as having no significant environmental effects. The NDP also includes policies to allow for limited expansion of local business however this policy limits business expansion to small scale schemes only and given the limited number of existing businesses and restriction in scale included in the policy significant effects from employment related policies included in the NDP are unlikely. The NDP also includes a suite of transport, community and leisure policies, many of which are similar in scope to policies set out in the Part 1 Local Plan (adopted), or Part 2 Local Plan (pre-submission) both of which have been subject to Sustainability Appraisal incorporating the requirements of the SEA regulations and would be unlikely to have significant environmental effects.
1b) the degree to which the plan or programme influences other plans and programmes including those in a hierarchy	No	The NDP must be in general conformity with the policies set out in the Adopted South Derbyshire Part 1 Local Plan. The NDP will support the implementation of strategic policies at the local level only and will provide more detailed guidance on implementing policies already contained in strategic level guidance for the District. It is not therefore considered to have a significant influence on other plans and programmes or the environment.
1c) the relevance of the plan or programme for the integration	No	The NDP will contribute, as required, to the achievement of sustainable development as set

of environmental considerations in particular with a view to promoting sustainable development.		out in the higher level Development Plan Policies included in the adopted Part 1 Local Plan and emerging Part 2 Local Plan). The NDP provides specific detail regarding protecting key views (as required by Policy BNE1 of the Part 1 Local Plan), identifying Local Green Spaces in the Parish (as required by BNE8 of the Part 2 Local Plan), Protecting Trees and Hedgerows consistent with Policy BNE3 of the Part 1 Local Plan and BNE7 of the emerging Part 2 Local Plan). Given the inclusion of policies in the neighbourhood plan is broadly in line with strategic policies included in the South Derbyshire Local Plan to protect such environmental assets it is unlikely that the NDP will have any significant effects on the environment.
1d) environmental problems relevant to the plan or programme:	No	The Plan does not allocate any sites that would give rise to significant environmental problems in respect of biodiversity, population, human health, fauna, flora, soil, water, air, climatic factors, material assets, cultural heritage (including architectural and archaeological heritage) and landscape. Moreover development that is proposed in Repton Parish up to 2028 through the South Derbyshire Local Plan has been subject to Sustainability Appraisal (including SEA). This document does not seek to make any additional allocations and on this basis would be unlikely to deliver development which could further exacerbate any identified environmental problems
1e) the relevance of the plan or programme for the implementation of Community legislation on the environment (for example, plans and programmes linked to waste management or water protection).	No	The Plan is not directly relevant to the implementation of Community legislation and does not allocate potentially polluting development.
<b>2. Characteristics of the effects and of the area likely to be affected, having regard in particular to:</b>		
2a) the probability, duration, frequency and reversibility of the effects	No	It is unlikely that there will be any irreversible damaging environmental impacts associated with the NDP.
2b) the cumulative nature of the Effect	No	The policies included within the NDP are unlikely to result in likely significant effects given the nature of policies proposed, their conformity with existing policy provisions included in the South Derbyshire Local Plan documents and the limited extent of potential developments (including across Repton Parish and in surrounding areas) that could come forward given the provisions of the development plan as a whole to 2028.
2c) the transboundary nature	No	The NDP is unlikely to have any discernible

of the effects		impact on neighbouring areas in South Derbyshire or elsewhere given the scope of and localised nature of the Plan and the nature of the policies proposed for inclusion in the Plan
2d) the risks to human health or the environment (e.g. due to accidents)	No	No significant risks to human health or the environment have been identified as a result of draft policies in the Plan. The Plan does however include a number of transport policies in respect of parking (T1) and Active Travel (T4), both of which could provide limited safety benefits by improving opportunity for parking vehicles off road and encouraging the provision of cycle routes which are separated from vehicular traffic. However these policies are unlikely to have a significant effect on human health in isolation and in any case general provisions relating to improvement in highways safety associated with parking and cycling are made within the policy aims included in the Part 1 Local Plan.
2e) the magnitude and spatial extent of the effects (geographical area and size of the population likely to be affected)	No	The Plan is concerned with development within Repton Parish only. This includes the villages of Repton and Milton and outlying areas as illustrated in Figure 1. The Parish has a population of 2,867 residents (around 3% of the District) living in 1036 households) and the Plan will inform development decisions only within this area.
2f) the value and vulnerability of the area likely to be affected due to – i) special natural characteristics or cultural heritage ii) exceeded environmental quality standards of limit values; or iii) intensive land-use	No	Both Repton and Milton have conservation areas covering much of the settlements. There is a significant number of listed buildings within the villages (including 6 grade I listed buildings and structures in Repton). There are no Historic Parks and Gardens or Scheduled Ancient Monuments in the Parish.  Both Settlements retain much of their historic character although Repton has been transformed by significant growth at the end of the 19th Century (much of which was associated with Repton School). Expansion has continued into the 20th and 21st centuries with additional development to the east of the Village. New housing allocations proposed through the adopted and emerging Local Plans are separated from the historic core of the village by modern post war housing. Given that the NDP does not include any housing allocations not included in the Local Plan Parts 1 and 2 and makes only limited provision for small scale extensions to existing businesses (which again is broadly in line with Policy in the Local Plan) it is unlikely that the Plan would have any significant effects in respect of the historic environment and cultural assets.

		<p>There are a number of Local Wildlife Sites located in Repton although these are unlikely to be affected by the proposals or policies included in the NDP. However the NDP could make a limited contribution towards protecting areas which do not meet the necessary criteria to warrant designation as a local wildlife site as a local greenspace. However given the lack of significance of these sites in biodiversity terms it is unlikely that these would significantly affect environmental quality in respect of biodiversity.</p> <p>There are no air quality management areas in the Parish. And given the scope and detail of the Plan it is unlikely to have any discernible impact on water quality objectives set out in the Water Framework Directive, although it is noted that both the Repton and Milton Brook catchment were identified as having an overall water quality status of 'moderate' when surveyed in 2015 and will need to reach a 'good' standard by 2027.</p> <p>Given the scope and detail of the plan it is highly unlikely to lead to an intensification of land use in the villages.</p>
<p>g) the effects on areas of landscapes which have a recognised national, community or international protection status.</p>	<p>No</p>	<p>There are no national or local landscape designations in the Parish. The Plan does however include policies to try and conserve local landscape and townscape character and whilst no significant development is allocated or supported through the NDP the policies it contains could provide limited benefits in respect of conserving local landscape and townscape value for instance by protecting key views or providing detail on appropriate materials for boundary treatments for any windfall developments that come forward.</p> <p>There is a significant assemblage of cultural heritage assets in the Parish with a particularly high concentration of listed buildings and structures within the two conservation areas for Repton and Milton). However as previously noted the NDP does not make any allocations not already proposed through strategic planning documents. In addition the sites identified in Repton in both the NDP and Local Plans are located to the east of the village separated from the historic core of the village by modern housing developments. Moreover existing policies in the Local Plan will seek to protect any designated and undesignated heritage assets. Given existing protections, the location and relatively small scale of the housing allocation</p>

		supported in the NDP and the nature of policies in the Neighbourhood Development Plan it is unlikely that it will have any significant effects on areas of cultural heritage which have a recognised national, community or international protection status.
--	--	--------------------------------------------------------------------------------------------------------------------------------------------------------------------------------------------------------------------------------------------------------------

### Screening Outcomes

3.8 Having reviewed the criteria, the Council has concluded that the emerging Parish of Repton Neighbourhood Development Plan (2016-2028) is not likely to have a significant environmental effect and accordingly will not require a Strategic Environmental Assessment. The main reasons for this conclusion are:

- The Neighbourhood Development Plan broadly supports the strategic development needs set out in the adopted Development Plan (notwithstanding comments at section 2.3 of this report), including the Adopted South Derbyshire Part 1 Local Plan (2011-28) and the Pre-submission Version of the Part 2 South Derbyshire Local Plan both of which have been subject to sustainability appraisal incorporating the requirements of the SEA regulations and have confirmed that these strategic plans are unlikely to have any significant environmental effects;
- The Neighbourhood Development Plan for Repton Parish must support and uphold the general principle of strategic policies in the Development Plan for South Derbyshire, and therefore has no, or limited influence on other plans or programmes; and,
- The Neighbourhood Development Plan for Repton Parish does not, itself allocate any sites for development and makes only limited provision for new development in the Parish up to 2028.

### 4.0 Habitats Regulations Assessment Screening

4.1 The Habitats Regulation Assessment (HRA) refers to the assessment required for any plan or project to assess the potential implications for European wildlife sites. The HRA therefore looks at whether the implementation of the plan or project would harm the habitats or species for which European wildlife sites are designated. European wildlife sites include:

- Special Protection Areas (SPA) designated under the Birds Directive (79/409/EEC) and
- Special Areas of Conservation (SAC) designated under the Habitats Directive (92/43/EEC)

4.2 In addition to SPAs and SACs, Ramsar sites are designated under the Ramsar Convention. Although they are not covered by the Habitats Regulations, as a matter of Government policy, Ramsar sites should be treated in the same way as European wildlife sites. European wildlife sites and Ramsar sites are collectively known as internationally designated wildlife sites.

- 4.3 The legislation sets out a process to assess the potential implications of a plan on internationally designated sites. The first stage of this process is a 'screening' exercise where the details of nearby internationally designated sites are assessed to see if there is the potential for the implementation of the Plan to have an impact on the site.
- 4.4 The Parish of Repton Neighbourhood Development Plan once adopted will form part of the Development Plan for South Derbyshire, and will be in conformity with the strategic policies in the adopted Local Plan for the District. The Adopted Part 1 Local Plan and the emerging Local Plan Part 2 have been subject to Habitat Regulations Screening Assessment.
- 4.5 The Screening Assessment for the Part 1 Local Plan identified a number of International Sites within South Derbyshire and neighbouring Districts and Boroughs. A map indicating the location of these are set out at Appendix 1: These included:
- The River Mease (within District)
  - West Midlands Mosses (10km from closest District Boundary)
  - Bees Nests and Green Clay Pits (16.5km from Closest District Boundary)
  - Peak District Dales (17.0km from Closest District Boundary)
  - Gang Mine (17.0km from Closest District Boundary)
  - Pasturefields Salt Marsh (18.5km from Closest District Boundary)
  - Cannock Chase (20.0km from Closest District Boundary)
- 4.6 In reviewing the likely effects of the Local Plan on identified International sites significant effects were discounted on all sites located outside of South Derbyshire. This view had been formed having reviewed the Conservation Objectives for the sites and the scale nature and location of development proposed in the District.
- 4.7 In respect of the River Mease SAC the HRA Screening Assessment for the Part 1 Local Plan stated:

*The River Mease is an unusually semi-natural system in a largely rural landscape, dominated by intensive agriculture. Water quality and quantity are vital to the European interests. Diffuse pollution and excessive sedimentation are catchment-wide issues which have the potential to affect the site. A recent assessment report undertaken notes the sites adverse condition and identifies the following issues:*

- *Drainage*
- *inappropriate weirs dams and other structures*
- *invasive freshwater species*
- *siltation*
- *water abstraction*
- *water pollution*
- *agriculture/run off*
- *water pollution - discharge*

*The latest condition of the SSSI units within the SAC compiled by Natural England in January 2009 describes the status of unfavourable, no change There are no development site proposals included in the Plan within or adjacent to the River Mease SAC, and no sites within the wider catchment of the River Mease. The Plan will therefore*

*not contribute towards foul water discharges to waste water treatments works in the catchment (Overseal, Netherseal or Smisby) or surface water discharges from new homes, employment sites or transport infrastructure.*

*The Plan will therefore not contribute towards siltation effects, urban diffuse pollution or foul water flows into the River. The Plan will also have no effect in respect of invasive freshwater species or agricultural runoff. In respect of water abstraction within the catchment abstraction in the River have been subject to a review of consents and sustainability reductions delivered to ensure abstractions do not affect the integrity of the site. Further licenses in the catchment would be strictly controlled by the Environment Agency and only permitted where it can be demonstrated that they would not affect the integrity of the site.*

**The Part 1 Local Plan will have no effect on the SAC**

- 4.8 The Habitat Regulations Assessment Screening Assessment is available to view on the Councils website [here](#).
- 4.9 The Part 2 Local Plan Habitat Regulations Screening Assessment has similarly considered the likely effects of the non-strategic allocations (including two housing allocations within the Mease Catchment at Overseal) as well as non-strategic policies included in the Local Plan. This assessment concluded that the Plan would not lead to likely significant effects either alone or in combination with proposals in other emerging plans or programmes. The Habitat Regulations Screening Assessment is available to view on the Councils website [here](#)
- 4.10 Given that The Neighbourhood Development Plan for Repton Parish does not allocate any sites for development and makes only limited provision for new development in the Parish up to 2028 it is unlikely that it would have any effect on International sites having regard to their conservation objectives of the identified sites; the distance of the Parish from international sites (more than 8km from the catchment for the River Mease and 20km from all other sites); and nature and scale of potential development that would be supported in the NDP.
- 4.11 Given that the plan will not have any effect on international sites identified it will not have any significant effects in combination with other plans or programmes.

## **5.0 Conclusions SEA Assessment**

### **Strategic Environmental Assessment**

- 5.1 On the basis of the SEA Screening Assessment set out in Table 2 above, it is concluded that the Parish of Repton Neighbourhood Development Plan will not have significant effects in relation to any of the criteria set out in Schedule 1 of the SEA Regulations, and therefore does not need to be subject to a SEA Report.

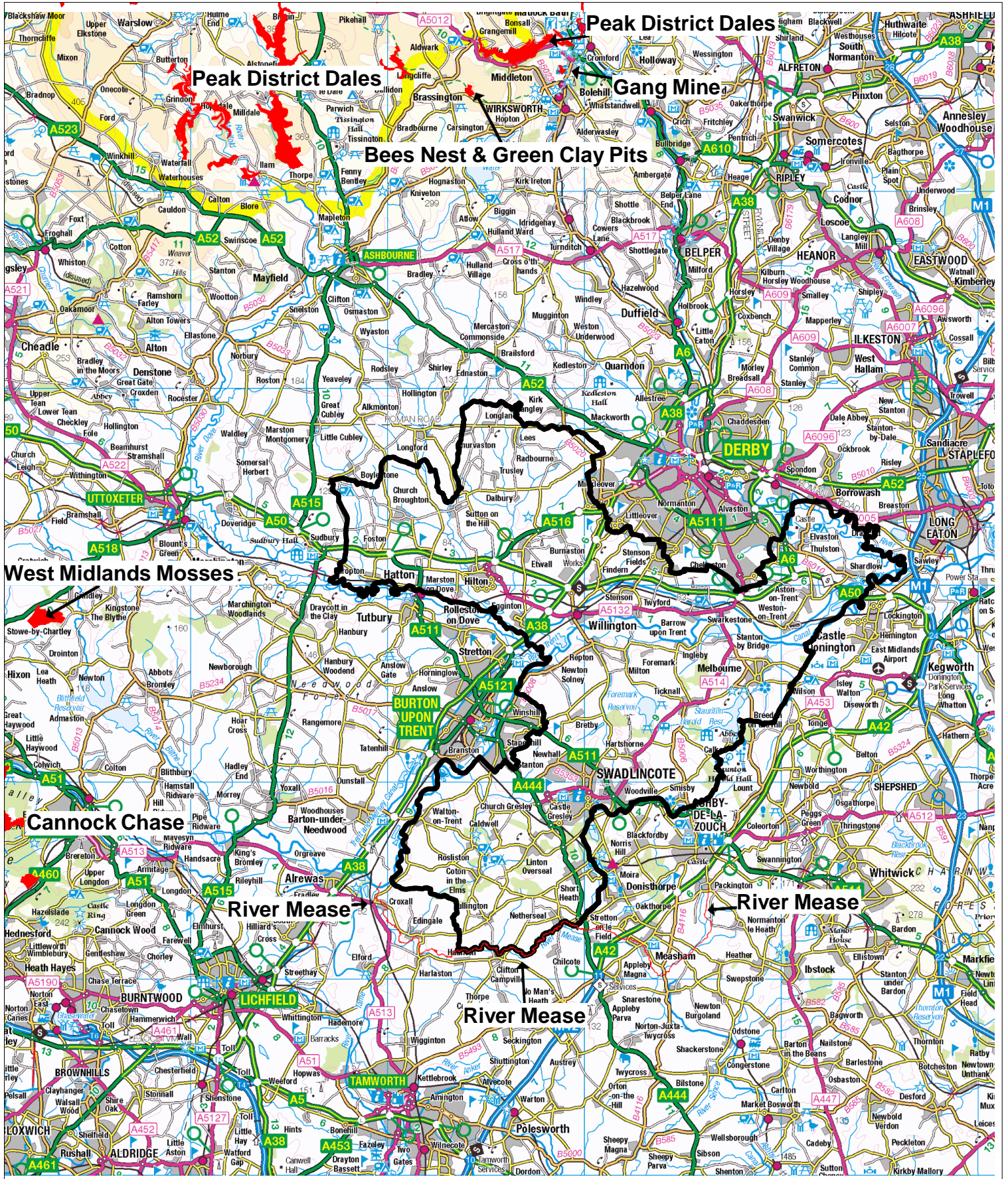
### **Habitats Regulations Assessment**

- 5.2 The screening assessment concludes that no likely significant effects are likely to occur with regards to the integrity of the International sites within and around South Derbyshire District, due to the implementation of the Parish of Repton Neighbourhood Development Plan. As such the will not require a full HRA to be undertaken.

5.3 From 15 November 2016 to 30 December 2016 a consultation was undertaken on a draft screening report with Natural England, the Environment Agency and Historic England. Prior to making a determination the Council was informed that the NDP has been subject to a number of changes. As a result the Council considered it necessary to alert the Consultation Bodies to these changes and reconsult on the changes to provide opportunity to provide updated comments. All agencies were provided with the Pre Submission version of the Repton Neighbourhood Development Plan and the draft screening decision. Consultation responses were received from all three bodies and these are shown in the following appendices.



# Appendix 1: Map of Natura 2000 sites



Date: 30 November 2016  
Our ref: 201807  
Your ref: SEA/HRA



Kevin Exley  
Planning Policy Officer (Sustainability)  
South Derbyshire District Council  
[Beth.Harris@south-derbys.gov.uk](mailto:Beth.Harris@south-derbys.gov.uk)

Customer Services  
Hornbeam House  
Crewe Business Park  
Electra Way  
Crewe  
Cheshire  
CW1 6GJ

T 0300 060 3900

## BY EMAIL ONLY

Dear Kevin

### Planning consultation: Repton Neighbourhood Plan - SEA and HRA Screening Report

Thank you for your consultation on the above document which was received by Natural England on 21 November 2016

Natural England is a non-departmental public body. Our statutory purpose is to ensure that the natural environment is conserved, enhanced, and managed for the benefit of present and future generations, thereby contributing to sustainable development.

Natural England welcomes the Screening Report which assesses the requirement for Strategic Environmental Assessment (SEA) and Habitat Regulations Assessment (HRA) for the Repton Neighbourhood Plan.

We can confirm that it is considered unlikely that any significant environmental effects will result from the implementation of the Repton Neighbourhood Plan that were not considered and dealt with by the Sustainability Appraisals of the Adopted South Derbyshire Local Plan (Part1) or Part 2 of the Local Plan (pre-submission).

Natural England also agrees with the report's conclusions that the Repton Neighbourhood Plan would not be likely to result in a significant effect on any European Site either alone or in combination and therefore no further assessment work under the Habitats Regulations would be required.

We would be happy to comment further should the need arise but if in the meantime you have any queries please do not hesitate to contact us.

For any queries relating to the specific advice in this letter only please contact Roslyn Deeming on 02080268500. For any new consultations, or to provide further information on this consultation please send your correspondences to [consultations@naturalengland.org.uk](mailto:consultations@naturalengland.org.uk).

We really value your feedback to help us improve the service we offer. We have attached a feedback form to this letter and welcome any comments you might have about our service.

Yours sincerely

Roslyn Deeming  
Lead Adviser  
Sustainable Development Team  
East Midlands Area



Dear Kevin,

**Planning Consultation: Repton Neighbourhood Development Plan**

Thank you for your consultation on the changes to the Repton Neighbourhood Development Plan.

Natural England is a non-departmental public body. Our statutory purpose is to ensure that the natural environment is conserved, enhanced, and managed for the benefit of present and future generations, thereby contributing to sustainable development.

The changes proposed do not materially affect the advice provided in our previous consultation response which continues to apply. We therefore have nothing to add to the comments made in our letter of 30 November 2016 (attached).

We would be happy to comment further should the need arise but if in the meantime you have any queries please do not hesitate to contact us. For any queries relating to the specific advice in this email only please contact me on 02080261940. For any new consultations, or to provide further information on this consultation please send your correspondences to [consultations@naturalengland.org.uk](mailto:consultations@naturalengland.org.uk).

Kind Regards

Sean Mahoney

Lead Adviser

Sustainable Development

East Midlands Area Team

**Natural England**

Apex Court  
City Link  
Nottingham  
NG2 4LA

Tel: 02080261940

Mobile: 07825934258

[www.gov.uk/natural-england](http://www.gov.uk/natural-england)

**We are here to secure a healthy natural environment for people to enjoy, where wildlife is protected and England's traditional landscapes are safeguarded for future generations.**

**Natural England offers two chargeable services – The Discretionary Advice Service ([DAS](#)) provides pre-application, pre-determination and post-consent advice on proposals to developers and consultants as well as pre-licensing species advice and pre-assent and consent advice. The Pre-submission Screening Service ([PSS](#)) provides advice for protected species mitigation licence applications.**

**These services help applicants take appropriate account of environmental considerations at an early stage of project development, reduce uncertainty, reduce the risk of delay and added cost at a later stage, whilst securing good results for the natural environment.**

We now offer free and chargeable advice to land owners and managers planning works on Sites of Special Scientific Interest through the [SSSI Advice Service](#).



## EAST MIDLANDS OFFICE

Ms Beth Harris  
South Derbyshire District Council  
Civic Offices  
Civic Way  
Swadlingcote  
DE11 0AH

Direct Dial: 0115 972 2403

Our ref: PL00049349

21 December 2016

Dear Ms Harris

**RE: REPTON NEIGHBOURHOOD DEVELOPMENT PLAN - SCREENING OPINION REQUEST**

Thank you for your consultation of 17 August 2016 and the request for a Screening Opinion.

For the purposes of consultations on SEA Screening Opinions, Historic England confines its advice to the question, "Is it likely to have a significant effect on the environment?" in respect of our area of concern, cultural heritage. Our comments are based on the information supplied with the screening request.

On the basis of the information supplied, including that set out in the draft plan in which no new development sites are allocated over and above those set out in the emerging Part 2 development plan, which have been considered by SA already, and in the context of the criteria set out in Schedule 1 of the Environmental Assessment Regulations [Annex II of 'SEA' Directive], Historic England is of the view that the preparation of a Strategic Environmental Assessment is not likely to be required.

The views of the other statutory consultation bodies should be taken into account before the overall decision on the need for a SEA is made. If a decision is made to undertake a SEA, please note that Historic England has published guidance on Sustainability Appraisal / Strategic Environmental Assessment and the Historic Environment that is relevant to both local and neighbourhood planning and available at:

<https://historicengland.org.uk/images-books/publications/sustainability-appraisal-and-strategic-environmental-assessment-advice-note-8/>

Should it be concluded that, overall, a SEA will be required for the Plan, Historic England would be pleased to discuss the scope of the assessment in relation to the historic environment in due course.

I hope that this information is of use to you at this time. Should you have any queries,



2nd Floor, WINDSOR HOUSE, CLIFTONVILLE, NORTHAMPTON, NN1 5BE

Telephone 01604 735460  
HistoricEngland.org.uk





Historic England

EAST MIDLANDS OFFICE

please do not hesitate to contact me.

Yours sincerely,

Rosamund Worrall  
Historic Environment Planning Adviser  
Rosamund.worrall@historicengland.org.uk



2nd Floor, WINDSOR HOUSE, CLIFTONVILLE, NORTHAMPTON, NN1 5BE

Telephone 01604 735460  
HistoricEngland.org.uk



*Historic England is subject to the Freedom of Information Act, 2000 (FOIA) and Environmental Information Regulations 2004 (EIR). All information held by the organisation will be accessible in response to an information request, unless one of the exemptions in the FOIA or EIR applies.*



Historic England

EAST MIDLANDS OFFICE

Ms Beth Harris  
South Derbyshire District Council  
Civic Offices  
Civic Way  
Swadlingcote  
DE11 0AH

Direct Dial: 01604 735460

Our ref: PL00049349

15 March 2017

Dear Ms Harris

**RE: REPTON NDP 2016-2028 - SEA SCREENING (REVISED NDP POLICY) CONSULTATION**

Thank you for consulting further on the Repton NDP following the amendments to NDP policy wording. Following consideration of the proposed amendments I am writing to advise that Historic England maintains its previous opinion, expressed in our correspondence of 21 December 2016, that a preparation of a SEA is not likely to be required in respect of the historic environment/cultural heritage matters.

I hope that this information is of use to you at this time.

Yours sincerely,

Rosamund Worrall  
Historic Environment Planning Adviser  
Rosamund.worrall@historicengland.org.uk



2nd Floor, WINDSOR HOUSE, CLIFTONVILLE, NORTHAMPTON, NN1 5BE

Telephone 01604 735460  
HistoricEngland.org.uk





Exley Kevin

---

From: Harris Beth  
Sent: 02 December 2016 09:05  
To: Exley Kevin  
Subject: FW: Repton Neighbourhood Development Plan SEA and HRA Screening

---

From: Drewry, Joe A [mailto:[joe.drewry@environment-agency.gov.uk](mailto:joe.drewry@environment-agency.gov.uk)]  
Sent: 02 December 2016 08:58  
To: Harris Beth  
Subject: FW: Repton Neighbourhood Development Plan SEA and HRA Screening

Hi Beth,

Thank you for asking us our opinion on the SEA for the Repton Neighbourhood Plan. Our response is as follows: 'The

Environment Agency has no comment as to whether the Plan should be subject to SEA legislation, however we are satisfied that the Plan is unlikely to have any significant environmental effects within our remit.'

Thanks,

Joe Drewry

Planning Advisor - Derbyshire

Sustainable Places - Planning Team

**Please note my new telephone number**

Email : [joe.drewry@environment-agency.gov.uk](mailto:joe.drewry@environment-agency.gov.uk)

External : 02030 253277, Internal: 53277

---

## Sworowski Nicola

---

**From:** Millbank, Rob <rob.millbank@environment-agency.gov.uk>  
**Sent:** 20 April 2017 15:16  
**To:** Exley Kevin  
**Cc:** Sworowski Nicola  
**Subject:** RE: Repton Neighbourhood Development Plan.

Dear Kevin,

Thank you for consulting us on the amended screening document.

We note that the Neighbourhood Plan does not propose additional site allocations to those already allocated within the Local Plan, and we therefore agree that it is unlikely to result in significant environmental impacts.

Whilst there are some environmental constraints within the Plan area, i.e. flood zones, it is our opinion that these can be adequately addressed and mitigated as part of subsequent planning applications.

In summary, I can confirm that we agree with the conclusions of the report.

Kind regards,

Rob

### Rob Millbank

Sustainable Places - Planning Specialist

### East Midlands Area

#### Environment Agency

✉ Trentside Office, Scarrington Road, West Bridgford, Nottingham, NG2 5FA

☎ **02030 255036** or **07500761448**

📧 [rob.millbank@environment-agency.gov.uk](mailto:rob.millbank@environment-agency.gov.uk)

---

**From:** Exley Kevin [mailto:Kevin.Exley@south-derbys.gov.uk]  
**Sent:** 20 April 2017 14:47  
**To:** Millbank, Rob <rob.millbank@environment-agency.gov.uk>  
**Cc:** Sworowski Nicola <Nicola.Sworowski@south-derbys.gov.uk>  
**Subject:** FW: Repton Neighbourhood Development Plan.  
**Importance:** High

Rob, please confirm receipt thanks  
Kevin

---

**From:** Exley Kevin  
**Sent:** 17 February 2017 17:05  
**To:** 'Rosamund.Worrall@HistoricEngland.org.uk'; 'joe.drewry@environment-agency.gov.uk'; 'Roslyn.Deeming@naturalengland.org.uk'  
**Subject:** Repton Neighbourhood Development Plan.  
**Importance:** High

All

I have previously consulted you directly on the Repton Neighbourhood Plan (your previous responses can be seen in the appendices to the draft SEA/HRA screening document attached).

Prior to issuing the Council's determination it came to light that the NDP was subject to a number of changes (which in the view of this Authority are relatively minor). Nonetheless, it is considered prudent to make you aware of these and to ask you consider whether this alters your previous consideration of the need to undertake SEA or an appropriate assessment in respect of the Repton NDP. In order to assist I have included a schedule of changes to the Repton NDP (compared to the previously considered version) in order that you can easily identify the changes that have been made to the document since your last comments and prior to its submission. Of course however you will also want to look at the pre-submission NDP as well and a pre-submission version can be found at:

[http://www.reptonvillage.org.uk/n\\_p/np\\_home.html](http://www.reptonvillage.org.uk/n_p/np_home.html)

As such please can you consider that the updated Plan. And let me know whether you think the changes necessitate the need to undertake SEA on the Plan or an Appropriate Assessment. I would be grateful if you could let me know by March the 16<sup>th</sup> as I will be looking to issue the Council's Determination by 20<sup>th</sup> March at the latest.

Hope this makes sense. If not, please feel free to contact me directly on the details below:

Kevin Exley  
Planning Policy Officer (Sustainability)  
South Derbyshire District Council

01283 228717