



Repton Village History Group Newsletter Late Autumn 2018

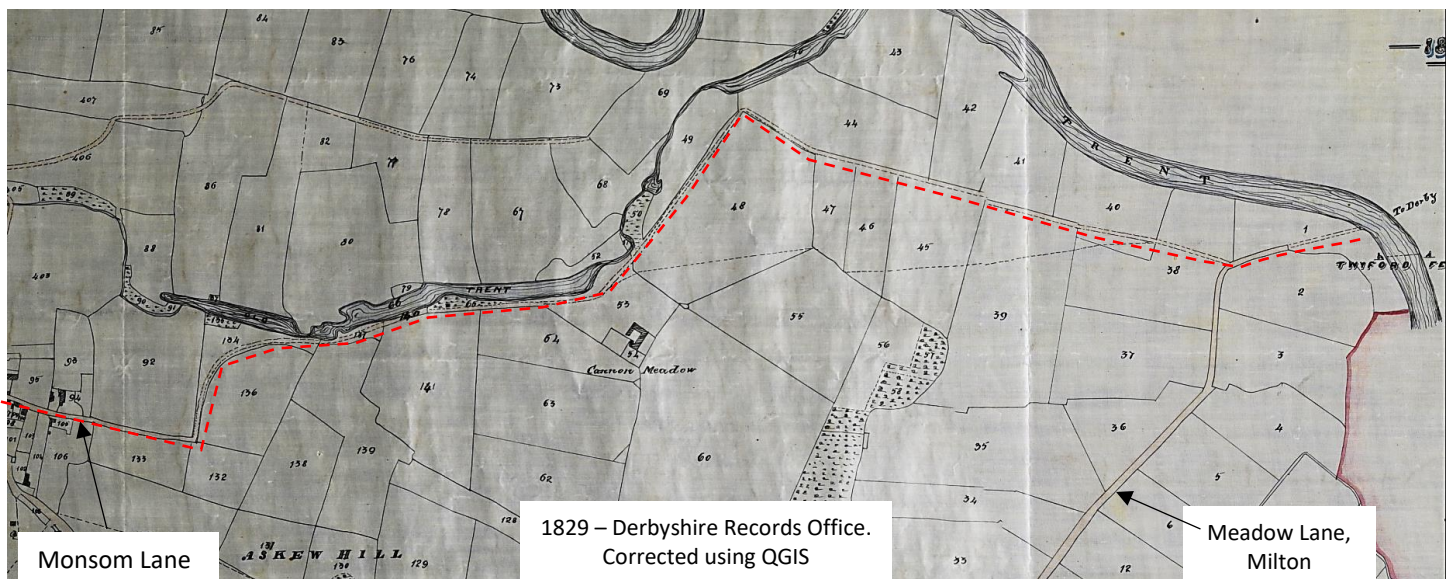


The ongoing programme:

- December 18th - 7.00pm A talk by Charles Proud on his documentary research, a buffet, quiz or two, plans
(Red Lion) for next year and the biographies from our display for the Royal British Legion.
- March 19th - quarterly meeting.
- May 21st - AGM.
- July 16th - quarterly meeting. (Due to space constraints, these meetings are limited to members)
- Aug 20th - visit (ideas needed)
- Nov 19th - quarterly meeting.

Historic Footpath – help please:

This map appeared in the last issue when we mentioned that it has been recognised that part of the historic route from Monsom Lane in Repton to Twyford Ferry is not officially recognised as a right of way. David Dickson has determined that this was the result of an oversight some years ago. It has been a popular recreational route in modern times, particularly as it takes you passed the site of the ferry and the ferry post - it was a chain operated ferry – to Anchor Church caves and you can make a good round trip via Foremark Church and Milton with minimal road walking. Our help is needed to aid the Parish Council in getting the missing bit officially recognised. If you have walked this route then please let us know or, better still, fill in the Parish Council’s form (6 pages - attached near end). Please return form in an envelope labelled Parish Council to the Parish Office at 40 High Street, Repton, Derbyshire, DE65 6GD.



Until 1839 when Willington Bridge was opened, this was one of three routes to Willington, Derby and all points north: The Repton Ferry at the end of Tanner’s Lane, the ford down from Brook End and this one via Twyford Ferry. It is likely that the latter was the larger vessel and the shortest route to Derby. The Enclosure Award of 1769 names it as Repton Marsh Road and it was a public route in those days.

WW1 survivors – a display in the Royal British Legion.

In 2014 we helped the Royal British Legion commemorate the lives of those from Repton and surrounding villages that died in the Great War. We published a short biography of each and produced a display of information about their lives. Quite rightly, every year, we remember those who died, but we rarely think about those whose fought and survived. Their world and that of their families was turned upside down. So we decided to try to identify as many as possible and find out about their lives too.

Working through the local 1911 census (the latest available to us) and any other sources available, Margaret Austen identified 450 men who would be of fighting age at the time of the war. More were added through the parish magazine, a search of the on-line family history sites, newspaper cuttings of the time, directories and the like. Then she searched for military references and records and checked for those that were really local folk and not just here very briefly. Quite a

few occupations such as utility workers (gas, water...), those running farms, manufacturers and the like were reserved. Some enlistees were not old enough and some were found to have medical issues that made them unsuitable for military service.

In the end the number we could identify as active servicemen was just 80. There were another 20 or so that we could not pin down without more information. Sadly an appeal via the Parish Magazine for information about relatives who served, generated only 2 responses. Most men were in the army, but there were also sailors and airmen - though we didn't find pilots among them. They embrace all strata of society from the well to do, well-connected and well educated to farm worker, carters, builders, apprentices and the like.

To add to this Margaret found records of 57 Voluntary aid Detachment Volunteers. These, mainly ladies, joined this Red Cross operation to provide hospital supplies and items to be sent to the troops. Some trained to nurse (and even served in France at the end of the war). Others volunteered for administrative roles in military hospitals.

140 biographies were produced and are available in the Legion and interesting stories displayed on boards. The material is available in digital form too.

Assisting with enquiries...

Unusually, we have had no new enquiries about family histories but, as reported in the last issue, we had been asked to help a New Zealand lady understand how her Great Grandmother Elizabeth Edmonds' death was recorded as being in the Milton Water works in 1897. A possible line of enquiry based on DNA had us hunting for Robin's Nest - a bungalow in Willington where she may have been at the end of her life. Thanks to Tony Whittaker of Willington History Group, we did find the bungalow but it is difficult to believe it was there in 1897. So we have drawn a blank.

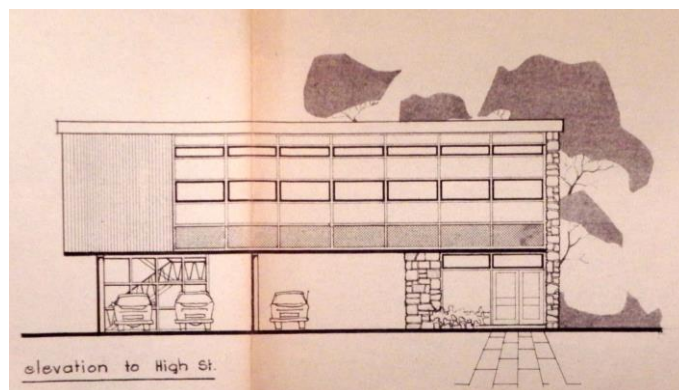
For many months we have been helping relatives of the Turner family trace their Repton roots. They had owned and operated the Rink which later became the original Village Hall and had lived in Jessamine - the thatched cottage that was opposite Boot Hill. Our work with the Village Hall records turned up interior plans of the cottage and we were able to pass a copy on.

We are hopeful of receiving information about Lancelot Samuel Davis and his forebears and successors. He was the son of a well to do hosiery manufacturing family in Hinkley who had mills in Leicester, Nottingham, Hinkley, Derby and Burton. He came to Repton after WW1 and lived in Warren House on Milton Road until he died in 1939. His wife Phyllis and children then lived in the last house on the left of Mount Pleasant. The family were anxious to replace a small memorial stone bearing just his initials, but we discovered that this had been done when his wife died. Although her ashes are not in Repton, a new stone had been put in place commemorating both of them. As a survivor of WW1 with a Repton connection, we have found out enough information to add a biography to the display in the Legion.

More information coming in about those who survived the Great War led us to research Samuel Joseph Phillips - Sam (John) Phillips' grandfather, and we were able to add a biography on him. He was a Repton lad and postman for many years. Enterprisingly, he would save the cost of the toll on Willington Bridge when he could, by putting his clothes on a passing cart and wading/swimming across. Edward Charles Ward, Roy Ward's grandfather, is another one to add. He fought in the Boer War and then worked at the school (and helped with the Officer Training Corps), worked on local farms, fought in the Great War and then worked for Burton Corporation in the gas works.

Village Hall

By the time this goes out, it is likely that the Village Hall will be in the process of demolition and we were fortunate to be given access to a box of documents relating to the original village hall on High street and the acquisition of land for the present one. We have listed these documents and are in the process of photographing the 3 volumes of meeting minutes and some of the deeds. As mentioned above, the original village hall was in an existing building called the Rink and built for roller skating in the early 1900s. It was opened free of debt in 1938, but it burned down in 1962. (See the RVHG website). There were various plans to rebuild on that site, including a two storey version with car parking underneath, but Holly Bush Farm land was acquired at the time the Askew Grove development was planned. There is still a trunk full of material to be gone through one day.



Graveyard trail

St Peter's church in Hartshorne have produced an excellent Churchyard Trail leaflet and there is lots of potential for one for St Wystan's churchyard. We have graves with shoeprints, lettering mistakes, a murder victim, some masonic graves, some graves with witch marks and some interesting and famous people buried here plus the WWII pilots from Burnaston Flying Training School. Anyone interested in taking it on?

Repton Casuals archive

Roger Dennis has been organising the Repton Casuals football club archive and the plan was that at the end of the last season we would get together with him to copy it or add it to the village archive. However, that still needs to be done. Again, a volunteer is needed to do this. It may be that some listing work will be needed so that we can add the contents to the overall Archive index.

Archaeological artefacts

More of the artefacts found during Professor and Birthe Biddle's dig in the 70s and 80s.



Shield boss found in trench 9 in 1987.

There is also this item which the museum believed to be a bracelet or similar. However we now understand that this is likely to be a decorative feature from around a shield boss.



REPTON
COPPER ALLOY
7591



A roved nail – from trench 7. These were used in the construction of clinker built boat hulls - presumably Viking.



An iron spoon from trench 8

A large photo of a tiny coin minted for King Ælfred of Wessex by Dudwine (a moneyer) perhaps from about 870.

Found in trench 8. Dudwine also minted coins for Burgred who was the Mercian King when the Vikings came in 873.

The archaeology of the Willington gravel pits - CEMEX talk

A contact with Bill Newton, who is the manager of the CEMEX aggregates quarry near Willington, led to a proposal that he get the archaeologists to come and talk to us about the finds in the gravel pits. This they did, for both Repton and Willington history groups, on 18th September in St Wystan's Church to an audience of about 80. Bill explained that aggregates are crucial to the country for everything from building houses and hospitals to bridges and roads and Derbyshire's geology means our river valleys provide a lot of it. The quarrying companies have to go through a painstaking approval process before permission for extraction is given. This includes geophysical surveys and test excavations. Then

archaeologists keep watch as mechanical diggers take each bucket load of topsoil up and only when all signs of archaeology have been studied is the process repeated for subsequent levels.

In fact, most artefacts are found at the level where the aggregates and the upper levels meet. Two archaeologists then described what had been found in these excavations and nearby. In the dry portions of the site, a number of ditches were found suggesting round houses and field boundaries as well as ancient water courses (paleochannels). Finds included worked flint and sherds of pottery, samples of which (including a beautiful little flint arrowhead), were on display. It seems that very early (Stone Age) settlements were reused and rebuilt by later generations right through the bronze, iron and Roman ages and into Anglo-Saxon and, in many cases, medieval and modern times.

In the wetter areas, the ancient channels were explored and samples of pollen and insects should reveal a lot about the vegetation and land use in earlier times. Particularly exciting is around 170 oak stakes driven through the top soils into the submerged gravels. They are split timbers, but not from large tree-trunks and often pieces that might be rejected for building. There were also remnants of a wattle panel. These posts are too small for dating by dendrochronology (counting tree rings) but carbon dating suggests late medieval dates -1426 to 1635. They are along the edge of an old river channel and a number of possibilities exist – fish weirs, a mill or (most likely) revetments to protect a river bank from erosion. It is rare to find timbers of relatively late dates on levels where much earlier archaeology can also be found, but the river can cut across areas several times, reducing ground levels to those of earlier times.

One exhibit was the end of a post which had been cut to a point by a metal axe. Viewed at the right angle, lines along the cut surface demonstrate that the axe head was damaged with chips along the cutting edge.

It was an excellent evening and we are very grateful to CEMEX and Bill Newton, the archaeologists from Trent and Peak Archaeological Trust and to St Wytan's Church.

Filming...

Repton has been inundated with film crews over recent years – mostly thanks to the Vikings. They were only here for one winter but seem to have made a bigger impression than the Anglo Saxons who were here for 400 years before them.

One crew were filming Cat Jarman's dig in June and about the same time, Megan Fox was here preparing a series entitled "Mysteries and Myths with Megan Fox". There was some puzzlement by the interpretation of her press release by the local papers who declared that she had been looking at tombs under St Wytan's Church. Not that there are any that we know about.

A few months later, Hello Halo were here filming for a historical series on rivers which will hopefully go out early next year. Heroic stuff snorkelling and wading chest deep in the Old Trent Water with the film crew in an inflatable dinghy. Some items were found but what they are or how old has yet to be revealed.



Calke Abbey walk

A dozen or so folk enjoyed a walk in July in Calke Park, led by Colin Stewart, to parts not accessible to the public. Colin is a volunteer who maintains a watch on archaeological features of the Calke Estate – including a host of built structures great and small. He had given us a talk on the archaeology of the park explaining that, in addition to the lime kilns and quarries, there were the brick works and a host of coal mining bell pits – some full of broken pottery from the many Ticknall kilns. According to Chris Pegg, Gresley folk talked of "knitting Ticknall smog".

To make comments or for more information, please contact Andy Austen on rvhg@reptonvillage.org.uk or 01283 702448
We are always pleased to receive information about the locality and the people that lived and worked near here.

DERBYSHIRE COUNTY COUNCIL

User Evidence Form for Claimed Public Right of Way

Please read the following notes before completing this form:

- The Council is required by Part III of the Wildlife & Countryside Act 1981 to keep a record of public rights of way in Derbyshire (“the Definitive Map”) and a legal duty to determine applications to modify the Definitive Map and Statement (DMMO applications).
- This form is designed for use by anyone who has personal knowledge about public use of (1) any route in Derbyshire for which a public right of way is not recorded, but is claimed to exist, or (2) any route for which a public right of way is claimed to be recorded incorrectly (e.g. in terms of the type of right of way shown, or the position).
- We are committed to protecting your personal data and ensuring that it is processed fairly and lawfully. Information you provide to us will be processed in accordance with the General Data Protection Regulations, The Data Protection Act 2018 and subsequent legislation. The basis on which the County Council processes your information is in accordance with the legal obligation under the Wildlife and Countryside Act 1981.
- In some cases the Council is required by law to allow other persons to have access to completed forms and other documents relating to a Definitive Map claim. Therefore, if you provide personal information (e.g. name, address, telephone number and date of birth), either using this form, or in any other document relating to a Definitive Map claim, it could become accessible to the public. The information provided will only be processed for the purpose of determining the Definitive Map claim and for no other purpose.
- Each individual who is willing and able to give evidence should complete their own form.
- Please complete all of this form. If you know about more than one route, please use a separate form for each.
- When considering a Definitive Map claim the Council will take into account all relevant evidence available, including completed user evidence forms. If the Council makes an order to modify the Definitive Map, and the order is subject to objections, the evidence will also be examined by an Inspector on behalf of the Secretary of State. Therefore it is important that you complete the form as accurately and fully as you can. If you cannot remember any details please write that you cannot remember.
- If you have been provided with this form by someone who is preparing a Definitive Map claim, please return any completed form to them instead of directly to the Council.

Personal Details

Please use **BLOCK CAPITAL LETTERS**

Full Name Date of Birth

Address

.....

Telephone No E-mail

The information that I have given on this form is true and accurate to the best of my knowledge.

Signed Date

Information about the route

Please describe the route that you are able to provide evidence for. Include details of the route itself, the points it runs between and the parish/es in which it is located.

REPTON FOOTPATH 13 & ONWARDS TO 14 & THE RIVER TRENT SITE OF THE FORMER TWYFORD FERRY CROSSING FROM MONSON LANE REPTON TO THE TWYFORD FERRY ALONG A PUBLIC BRIDGE ROAD ROUTE KNOWN AS REPTON MARSH RD.

If a plan is already attached to this form which covers the area of the route you are describing, please mark clearly on it the precise line of the route from start to finish. Otherwise, please attach an Ordnance Survey based plan to a scale of no less than 1:25,000 which you have marked clearly with the precise line.

MARKED IN RED ON MAP
What is the approximate width of the route?

UP TO 30' WIDE

Details of your use of the route

a) In what way/s have you used the route? (Please tick the appropriate box/es)

- On foot In/on a motor vehicle
- On horseback Other, please specify
- On a pedal cycle

b) In what way/s have you noticed other people using the route? (Please tick the appropriate box/es)

- On foot In/on a motor vehicle
- On horseback Other, please specify
- On a pedal cycle

c) What have been your reasons for using the route? (Please tick the appropriate box/es)

- To visit places on the route As part of a longer journey

Please specify where you have travelled to and from.

.....
.....

d) Have you used the route as part of an organised group event?

- Yes No

If so, please give details.

.....
.....

e) How have you used the route, and during which years, and approximately how frequently have you used the route? (please complete as appropriate and tick the appropriate box)

On foot Year from to
Daily Weekly Monthly Less than monthly

On horseback Year from to
Daily Weekly Monthly Less than monthly

On pedal cycle Year from to
Daily Weekly Monthly Less than monthly

In/on motor vehicle Year from to
Daily Weekly Monthly Less than monthly

Other method (Please specify)
Year from to
Daily Weekly Monthly Less than monthly

Were there any years, within the period stated above, when you did not use the route? If so, when was this? Please give dates.

.....
.....

If your frequency of use of the route changed over time, please describe how.

.....
.....

Further information

a) Do you remember the route ever having been blocked? If so, give details and dates.

.....
.....

b) Has the route always followed the alignment described above? YES/NO?
If NO please describe how, when and why it changed.

.....
.....
.....

c) Do you recall any stiles or gates on the route? If so, give details of where they were and when they were present, whether they prevented or deterred use of the route and mark their positions (S for stile, G for gate, B for bridge) on any plan attached.

.....
.....
.....

If gates were present were they ever locked? YES/NO

If YES when and for how long were the gates locked?

d) Do you recall seeing any notices? If so, where were they placed, when were they present and what was their wording?

.....
.....

e) Were you working for the owner or occupier of any land along the route when you used it, or were you then an occupier of any such land? If so, give details and dates.

.....
.....

f) Were you ever given permission to use the way? If so, provide details of who gave permission and when.

.....
.....

g) Did you have a private legal right of access over the claimed route? ~~YES/NO~~

h) Have you ever been stopped or turned back when using the route? If so, give details and dates.

.....
.....

i) Were you ever told by anyone, that the route was not public, or that it was only public for particular purposes (eg that it was a public footpath, not bridleway)? If so, give details and dates.

.....
.....
.....

If you have any further comments to make please use the space below.

HISTORICAL DOCUMENTS DESCRIBE A
PUBLIC BRIDGE RD ALONG THIS ROUTE
SINCE 1769. OS MAPS FROM 1829 &
1901 STATE IT TO BE A PUBLIC
HIGHWAY.

Would you be willing to attend as a witness at a public Inquiry or hearing to give evidence of your use of the route?

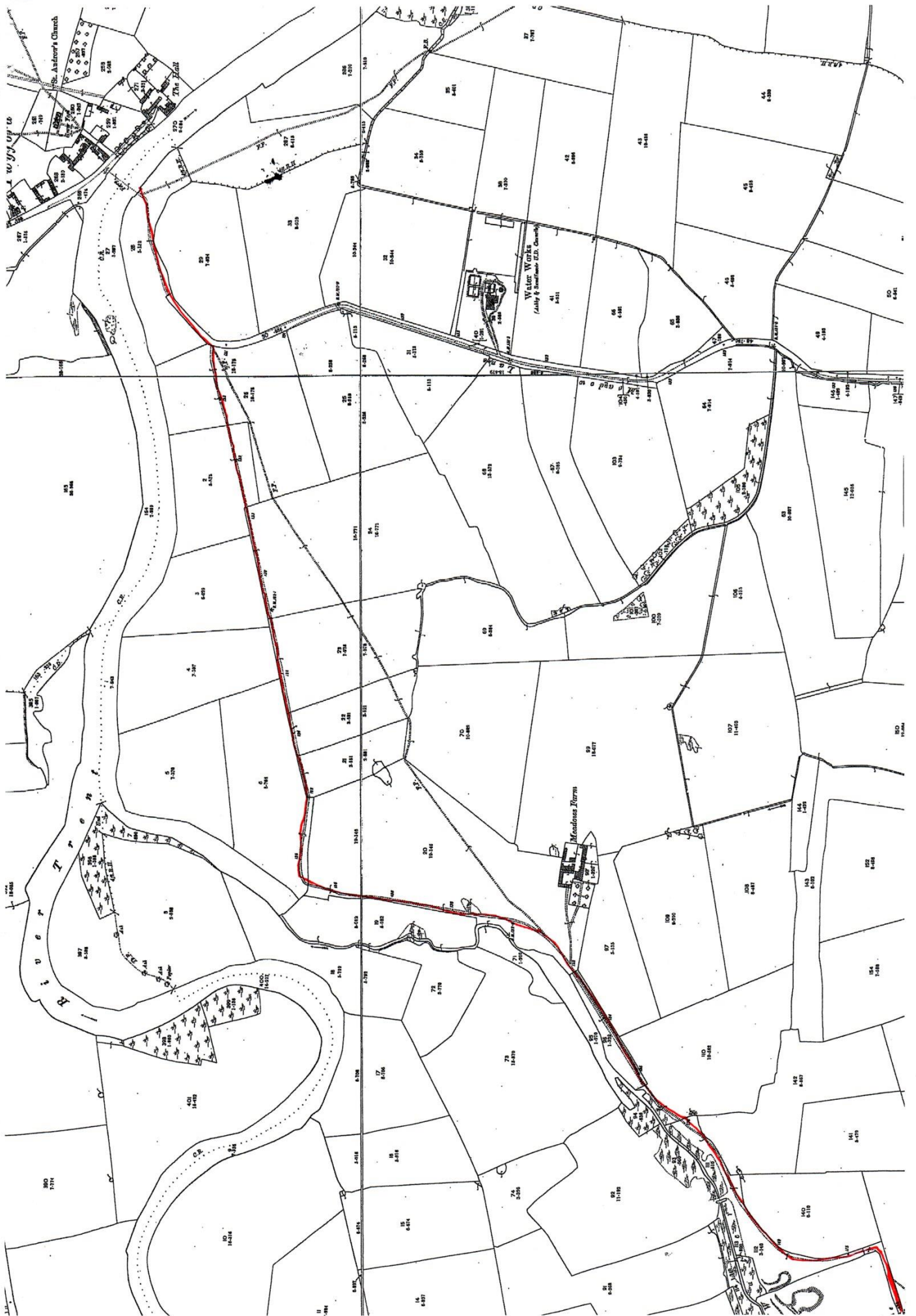
Yes No

Any requests for additional forms or other communications to the Council about this form should be addressed to:

Director of Legal Services (Room B219)
Derbyshire County Council
Matlock
Derbyshire
DE4 3AG

Telephone: 01629 539262 Email: dmmo.register@derbyshire.gov.uk

This version of base form issued: October 2018



We no longer offer a programme of monthly talks, so here are the published programmes for some other Local History Groups:

Willington History Group (7.30pm, The Old School Willington)
Thursday 13th December Family Trees Revisited
Thursday 10th January Made in Derbyshire – Shirley Horton
Thursday 14th February Muses, Models and Mistresses – Richard Stone.
Thursday 14th March Lace-makers- Women on the Canals – Kate Hession
Thursday 11th April A Victorian Governess` Life – Liz Keeley
Thursday 9th May Guided walk around Ashby -£2 per head, provided through auspices of Ashby Museum.

Ticknall Preservation and Historical Society (7.30pm, Ticknall Village Hall, 01530 810266/01283 762064/
01332 862116)
Friday 18th January History of Melbourne with Philip Heath. Local historian Philip will be giving us a comprehensive illustrated talk of Melbourne.
Friday 22nd February Ancient Coal Mining with Stewart Warburton. Stewart will be revealing details of 14th century coal mining discovered locally at Lount.
Friday 29th March The Life of Edith Piaf with Julie Ede. Julie returns to talk about the fascinating life of this French Singer from the Paris streets to international stardom.
Friday 26th April The History of Palitoy with Bob Brechin
Bob, an ex-design engineer, at Palitoy talks about the company history and the 60 years of Action Man.
Friday 31st May The Ecclesbourne Railway with Eric Boultyby. Eric will be giving a talk on the history and restoration of the Ecclesbourne Railway.
Friday 28th June Outside visit - Come ride on the restored Ecclesbourne line from Duffield to Wirksworth.

Melbourne Civic Society (7.30pm, Assembly Rooms High St Melbourne, 01332 865760, Guests always welcome.
Members £1, non-members £2. pamadams56@yahoo.co.uk)
Monday January 26th: The Pentrich Uprising by Michael Parkin An account of the causes and consequences of the armed uprising in Derbyshire.
Monday February 25th: Hippos, Hares & Horseshoes: Derbyshire Mammals, Past, Present & Future by Debbie Alston
Monday March 25th: A.G.M followed by the History of Melbourne Wood by Philip Heath. A local historian shares his detailed knowledge of the area.

Etwall and Burnaston History Group (7.30pm, Chapel School Room, 01283 730287)
Tuesday 15th January 2019 Muses, Models and Mistresses - Richard Stone
Tuesday 19th February Pestilence, Intrigue and Murder - Ian Morgan
Tuesday 19th March The Real Dad`s Army - Jed Jaggard
Tuesday 16th April Derbyshire Adventurers and Explorers (Part 2) - Shirley Horton
Tuesday 21st May AGM followed by `History of Slavery` - John Cumpstone

Unless otherwise stated, meetings are held in the Methodist Chapel Schoolroom, Willington Road, Etwall DE65 6HX and commence at 7.30 pm. Visitors welcome at all meetings (admission £3.00) **Further details:**
www.etwallhistory.org or Pam Kerby (01283 730287) sandypits.kerby@btinternet.com

Hilton and Marston History Group (hiltonhistory@gmail.com, Methodist chapel, Main St. Hilton DE65 5FF 7.30pm
£3.00)
Thursday 3rd January No Meeting
Thursday 7th February Friargate Bridge, Peter Mosley
Thursday 7th March AGM
Thursday 4th April Mary Queen of Scots. The captive Queen in England 1568-84, David Templeman