

## Farewell to the NatWest Bank

We have lost another amenity in the village: the last bank closed on 20 June 2014. It is annoying, an inconvenience and it was sad to have to say goodbye to the friendly, helpful staff. It was also the end of an era.

In the 1861 census the premises at The Cross then comprised of the Repton School Tuck/Grub Shop, a home attached, with a farm at the rear. Ex-pupils later wrote of their fond memories of the rosy-cheeked sisters who ran the shop. Was it Emma and Mary (known as Polly) who drew their admiration, or their delicious baking and confectionery? It was also mentioned that their father, Mr Robert Measham, although a farmer of 60 acres, seemed to spend most of his time sat in a chair in front of the fire.

### 1861 Census, Market Place, Repton (now known as The Cross, Repton)

ROBERT MEASHAM	HEAD	MARRIED	Male	361825	FARMER OF 60 ACRES EMPLOYING LABOURERS & 1 BOY	REPTON, DERBYSHIRE
EMMA MEASHAM	WIFE	MARRIED	Female	341827	FARMER'S WIFE	REPTON, DERBYSHIRE
GEORGE MEASHAM	SON	UNMARRIED	Male	211840	FARMER'S SON	REPTON, DERBYSHIRE
EMMA MEASHAM	DAUGHTER	UNMARRIED	Female	261835	CONFECTIONER	REPTON, DERBYSHIRE
MARY MEASHAM	DAUGHTER	UNMARRIED	Female	241837	CONFECTIONER	REPTON, DERBYSHIRE
MARY MUGLISTON	SISTER IN LAW	UNMARRIED	Female	521809	SERVANT	REPTON, DERBYSHIRE
RICHARD LANE	SERVANT	UNMARRIED	Male	191842	CARTER	BARROW, DERBYSHIRE
MARY HARVEY	SERVANT	UNMARRIED	Female	201841	DAIRY MAID	HARTSHORNE, DERBYSHIRE

Many years later Percy Tailby and Mabel, née Eaton, lived in the house (then named Christleton) at The Cross, along with their daughter Joan Elizabeth (Bunty), who was born in 1922. In 1924 Percy and Mabel joined Jack Dean to form the Blue Bus Services. Later still, the Wild family resided in the house.

The private banking company of Samuel Smith of Derby was established in 1806 by Samuel Smith III and his brothers George and John. The Derby business was based on the acquisition of the business of Richardson & Co (established c1778), bankers of Derby, owned by local merchants Samuel and Henry Richardson. The Samuel Smith Bank traded from Tenant Street, issued its own notes and was known as the Derby Bank. The brothers also had other Smith Banks in Nottingham, London, Hull and Lincoln, trading under a variety of partnership names.



In 1902 the Derby Bank, along with the other Smith family banks, merged with Union Bank of London Ltd (established in 1839) and became known as the Union of London & Smiths Bank Ltd. In 1909 this company placed an advertisement in the booklet 'Handbook to Repton' by J T Emmott (headmaster of the village school). The bank announced that they were open at Repton on Tuesdays and Fridays, 12.30 to 2.30 pm. When the service first started is not known. At the beginning of 1918 their address was given as The Cross.

## *The Union of London and Smiths Bank, Ltd.*

*(Established 1839),*

WITH WHICH IS INCORPORATED

### SAMUEL SMITH & CO., Bankers, Derby,

*(Established 1806).*

<b>Authorised Capital</b>	-	-	-	-	<b>£25,000,000</b>	<b>Os.</b>
<b>Subscribed Capital</b>	-	-	-	-	<b>£22,934,100</b>	<b>Os.</b>
<b>Paid-up Capital</b>	-	-	-	-	<b>£3,554,785</b>	<b>10s.</b>
<b>Reserve Fund-</b>	-	-	-	-	<b>£1,150,000</b>	<b>Os.</b>

**Number of Proprietors, upwards of 8,900.**

Open at REPTON Tuesdays and Fridays,  
12.30 to 2.30 p.m.


LOCAL DIRECTOR AT DERBY:

**GERARD HAMILTON SMITH, Esquire.**

In 1918 the Union of London & Smiths Bank linked up with the National Provincial Bank. This was a company that had been operating in England and Wales since 1833. In its turn the National Provincial Bank merged with the Westminster Bank in 1970 to form the National Westminster Bank.

Within living memory the NatWest has operated from the same building in Repton. Research suggests the branch opened in 1918, having been incorporated that same year with the

Samuel Smith Bank. The bank, in its various forms, has served the village of Repton for over 100 years.



**Tradition**  
•• with **Progress**

*de*

The traditions of a Bank can only be maintained by a spirit of enterprise and progress.

Established in 1833, the National Provincial Bank has, throughout the succeeding years, pursued a policy which has enabled it to keep pace with the ever changing financial requirements of industry, commerce and the private individual.

**NATIONAL  
PROVINCIAL  
BANK  
LIMITED**

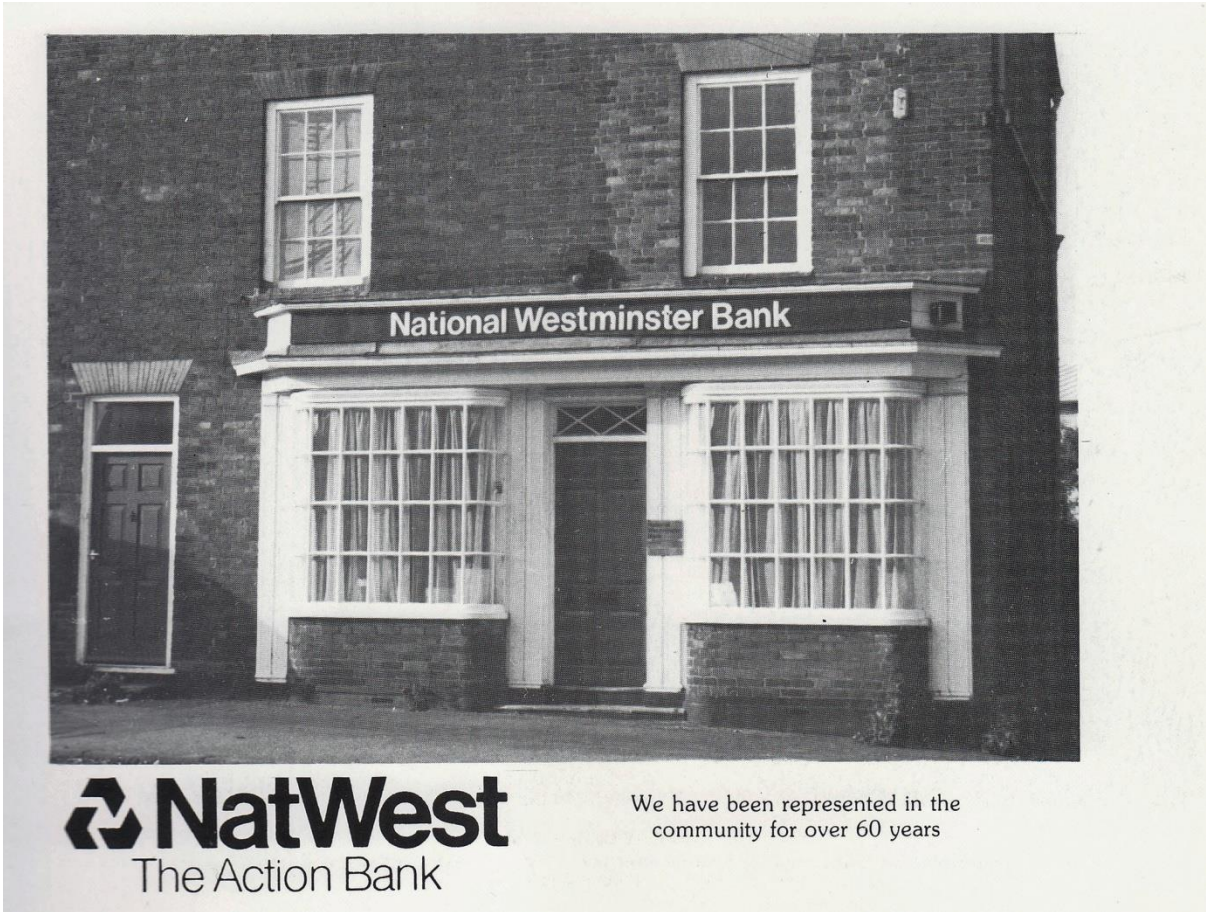
*Head Office :*  
**15, Bishopsgate, London, E.C. 2**

**DERBY BRANCHES :**  
7, Market Place } *Manager,*  
343, Normanton Road } **F. C. Stuart.**  
Also Offices at Belper, Borrowash,  
Burton-on-Trent, Ilkeston, Long  
Eaton and Repton.

*Affiliated Banks :*  
**COUTTS & CO.**  
**GRINDLAY & CO., LTD.**

Derby Daily Telegraph, 1 February 1939





Repton Remembered, 1986



June 2014